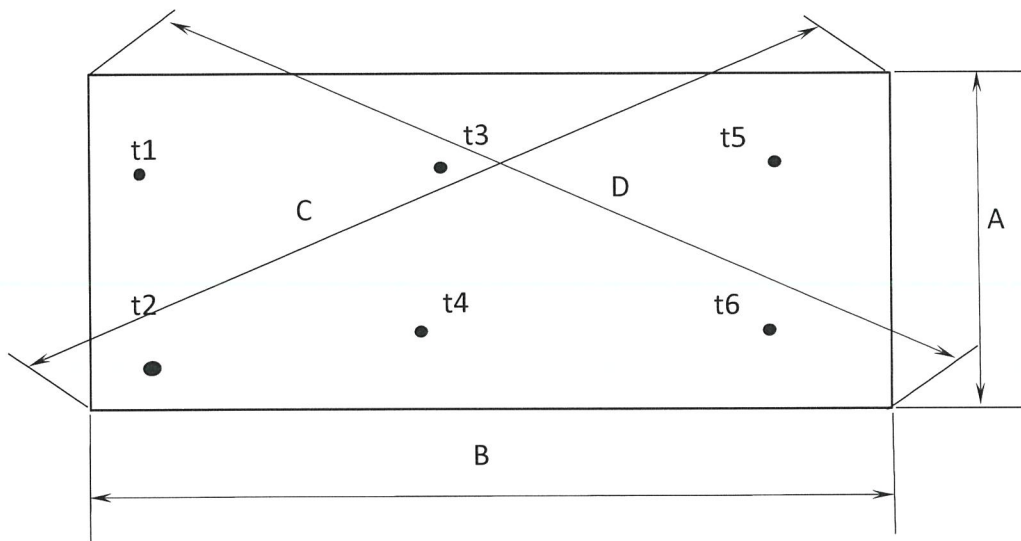


DIMENSIONAL AND VISUAL RECEIVING MATERIAL INSPECTION REPORT

Project	: POBOYA 2000 TPD EXPANSION	Item Name	MATERIAL PLATE	Report No.	: 12-DVIR-HEI-10-25
Client	: PT. CITRA PALU MINERALS	Size	PL. 12 x 1829 x 6096	Date	: October 23, 2025
RICR No.	: QA/HEI/RICR/E2502-03	Specification/ Heat. No.	A36 / 22E2509	Page No.	: 1 of 2

SKETCH : PLATE T: 12 x 1829 x 6096 mm



dimension in mm

Point Inspected	A	B	C	D	t1	t2	t3	t4	t5	t6	-	-	-	-
Design	1829	6096	6364	6364	12	12	12	12	12	12				
Tolerance	± 10	± 10	± 10	± 10	± 0,7	± 0,7	± 0,7	± 0,7	± 0,7	± 0,7				
Actual	1832	6100	6370	6370	12	12	12.3	12.5	12.2	12				

QUANTITY : 10 PCS

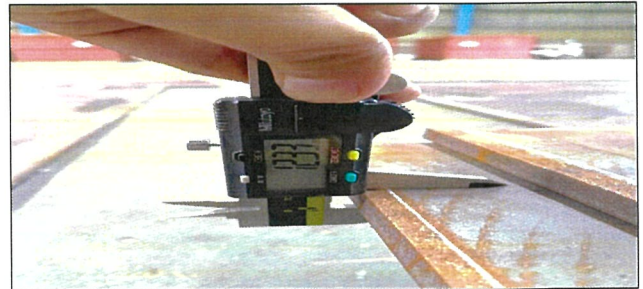
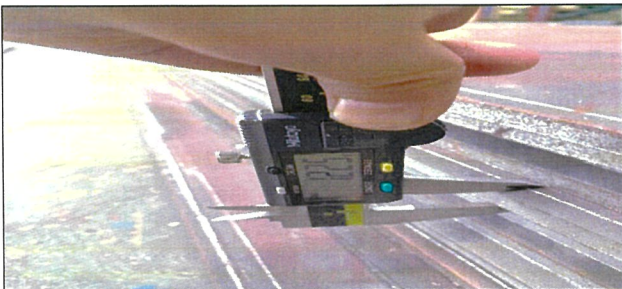
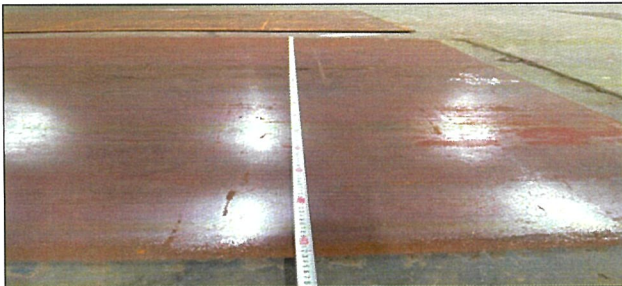
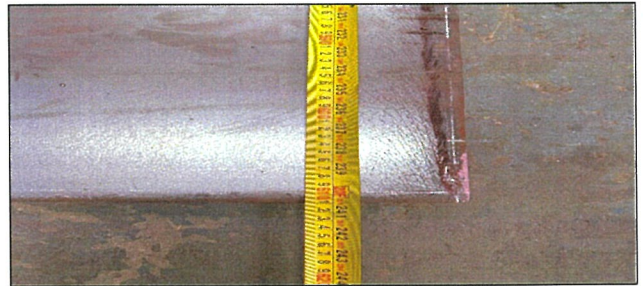
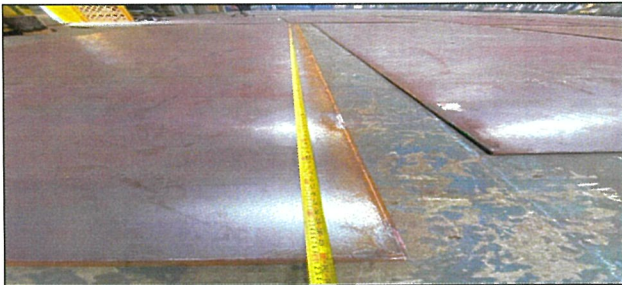
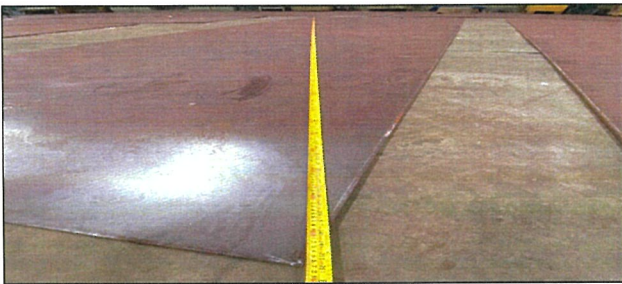
Remarks : Random Check

RESULT OF VISUAL INSPECTION					<input checked="" type="checkbox"/> ACCEPTED	<input type="checkbox"/> REJECTED
	Inspected by	Witnessed/ Reviewed by		Witnessed/ Reviewed by		Witnessed/ Approved by
Company	PT. Hanazono Engineering Indonesia			COMO ENGINEERS		PT Citra Palu Minerals
Signature & Name	 Benridho			 Rusnandi		Irfan
Date	Oct 24, 2025			Oct 27, 2025		

DIMENSIONAL AND VISUAL RECEIVING MATERIAL INSPECTION REPORT

Project	: POBOYA 2000 TPD EXPANSION	Item Name	MATERIAL PLATE	Report No.	: 12-DVIR-HEI-10-25
Client	: PT. CITRA PALU MINERALS	Size	PL. 12 x 1829 x 6096	Date	: October 23, 2025
RICR No.	: QA/HEI/RICR/E2502-03	Specification/ Heat. No.	A36 / 22E2509	Page No.	: 2 of 2

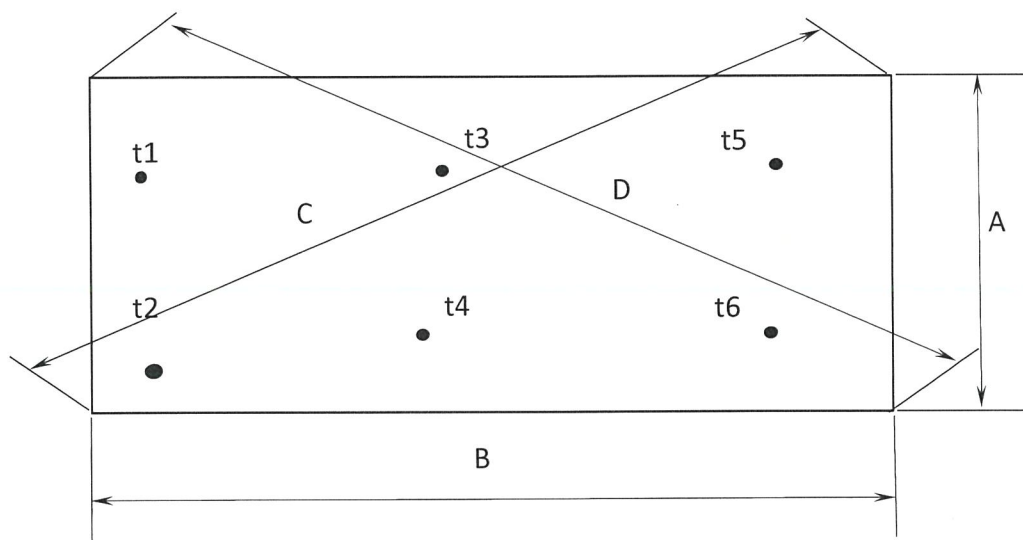
PHOTOGRAPH



DIMENSIONAL AND VISUAL RECEIVING MATERIAL INSPECTION REPORT

Project	: POBOYA 2000 TPD EXPANSION	Item Name	MATERIAL PLATE	Report No.	: 13-DVIR-HEI-10-25
Client	: PT. CITRA PALU MINERALS	Size	PL. 12 x 1829 x 6096	Date	: October 23, 2025
RICR No.	: QA/HEI/RICR/E2502-03	Specification/ Heat. No.	A36 / 11F2512	Page No.	: 1 of 2

SKETCH : PLATE T: 12 x 1829 x 6096 mm



dimension in mm

Point Inspected	A	B	C	D	t1	t2	t3	t4	t5	t6	-	-	-	-
Design	1829	6096	6364	6364	12	12	12	12	12	12				
Tolerance	± 10	± 10	± 10	± 10	± 0,7	± 0,7	± 0,7	± 0,7	± 0,7	± 0,7				
Actual	1832	6100	6370	6370	12.3	12	12.3	12	12.2	12.3				

QUANTITY : 10 PCS

Remarks : Random Check

RESULT OF VISUAL INSPECTION



ACCEPTED



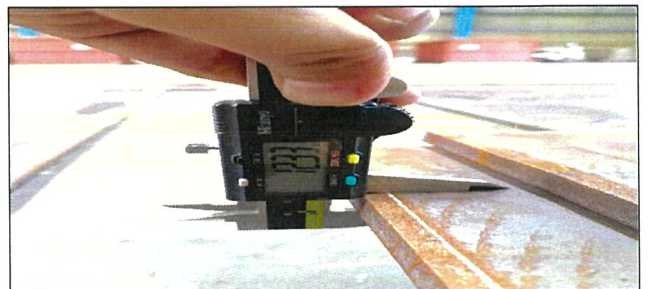
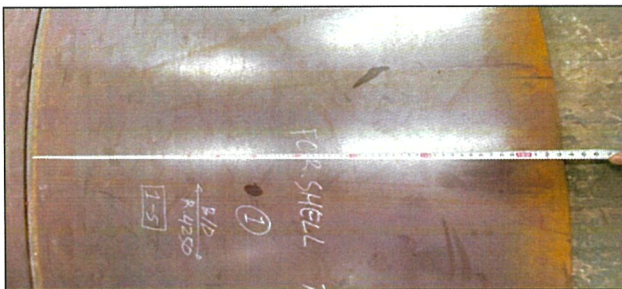
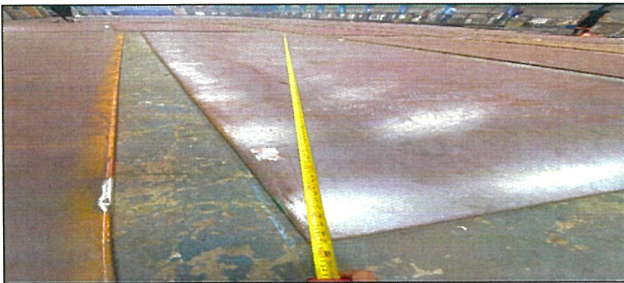
REJECTED

	Inspected by	Witnessed/ Reviewed by	Witnessed/ Reviewed by	Witnessed/ Approved by
Company	PT. Hanazono Engineering Indonesia		COMO ENGINEERS	PT Citra Palu Minerals
Signature & Name	 Benridho		 Rusnandi	 Irfan
Date	Oct 24, 2015		Oct 27, 2025	

DIMENSIONAL AND VISUAL RECEIVING MATERIAL INSPECTION REPORT

Project	: POBOYA 2000 TPD EXPANSION	Item Name	MATERIAL PLATE	Report No.	: 13-DVIR-HEI-10-25
Client	: PT. CITRA PALU MINERALS	Size	PL. 12 x 1829 x 6096	Date	: October 23, 2025
RICR No.	: QA/HEI/RICR/E2502-03	Specification/ Heat. No.	A36 / 11F2512	Page No.	: 2 of 2

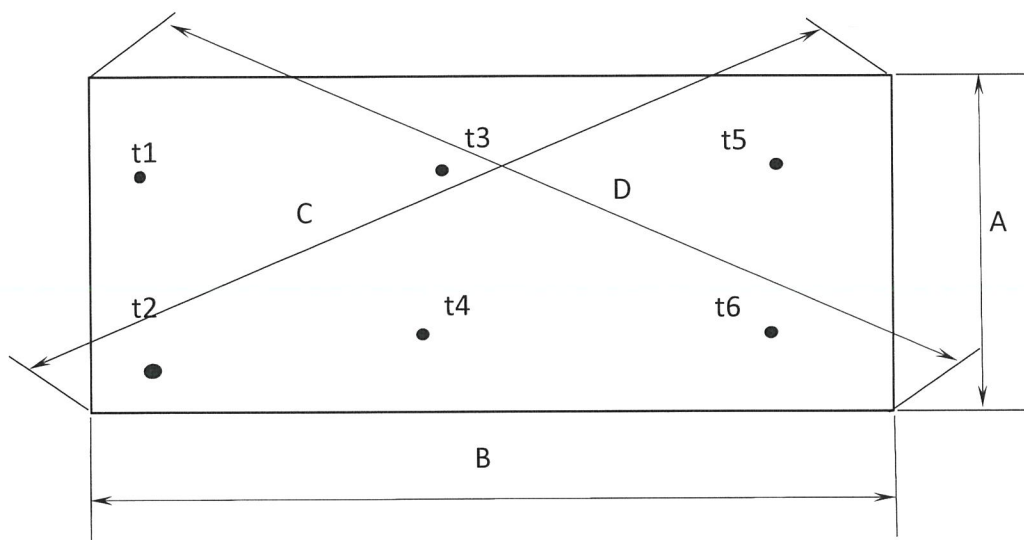
PHOTOGRAPH



DIMENSIONAL AND VISUAL RECEIVING MATERIAL INSPECTION REPORT

Project	: POBOYA 2000 TPD EXPANSION	Item Name	MATERIAL PLATE	Report No.	: 14-DVIR-HEI-10-25
Client	: PT. CITRA PALU MINERALS	Size	PL. 12 x 1829 x 6096	Date	: October 23, 2025
RICR No.	: QA/HEI/RICR/E2502-03	Specification/ Heat. No.	A36 / 11F2512	Page No.	: 1 of 2

SKETCH : PLATE T: 12 x 1829 x 6096 mm



dimension in mm

Point Inspected	A	B	C	D	t1	t2	t3	t4	t5	t6	-	-	-	-
Design	1829	6096	6364	6364	12	12	12	12	12	12				
Tolerance	± 10	± 10	± 10	± 10	± 0,7	± 0,7	± 0,7	± 0,7	± 0,7	± 0,7				
Actual	1832	6100	6370	6370	12	12.3	12	12	12.1	12				

QUANTITY : 16 PCS

Remarks : Random Check

RESULT OF VISUAL INSPECTION



ACCEPTED



REJECTED

	Inspected by	Witnessed/ Reviewed by	Witnessed/ Reviewed by	Witnessed/ Approved by
Company	PT. Hanazono Engineering Indonesia		COMO ENGINEERS	PT Citra Palu Minerals
Signature & Name	 Benridho	 Rusnandi		Irfan
Date	Oct 24, 2025	Oct 27, 2025		

DIMENSIONAL AND VISUAL RECEIVING MATERIAL INSPECTION REPORT

Project	: POBOYA 2000 TPD EXPANSION	Item Name	MATERIAL PLATE	Report No.	: 14-DVIR-HEI-10-25
Client	: PT. CITRA PALU MINERALS	Size	PL. 12 x 1829 x 6096	Date	: October 23, 2025
RICR No.	: QA/HEI/RICR/E2502-03	Specification/ Heat. No.	A36 / 11F2512	Page No.	: 2 of 2

PHOTOGRAPH

